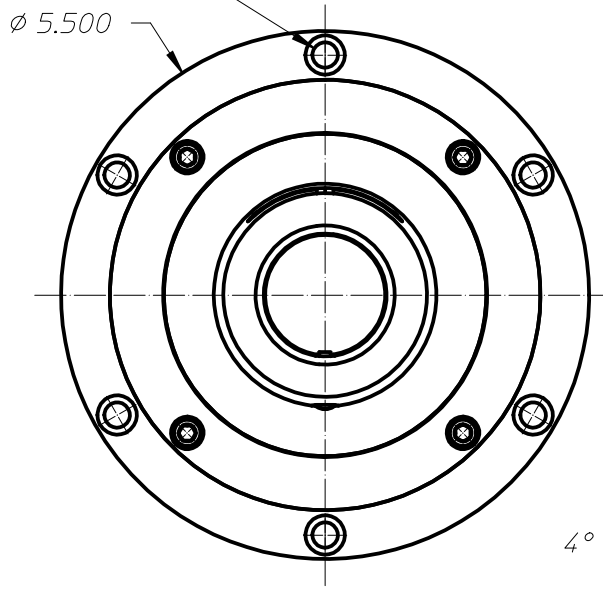
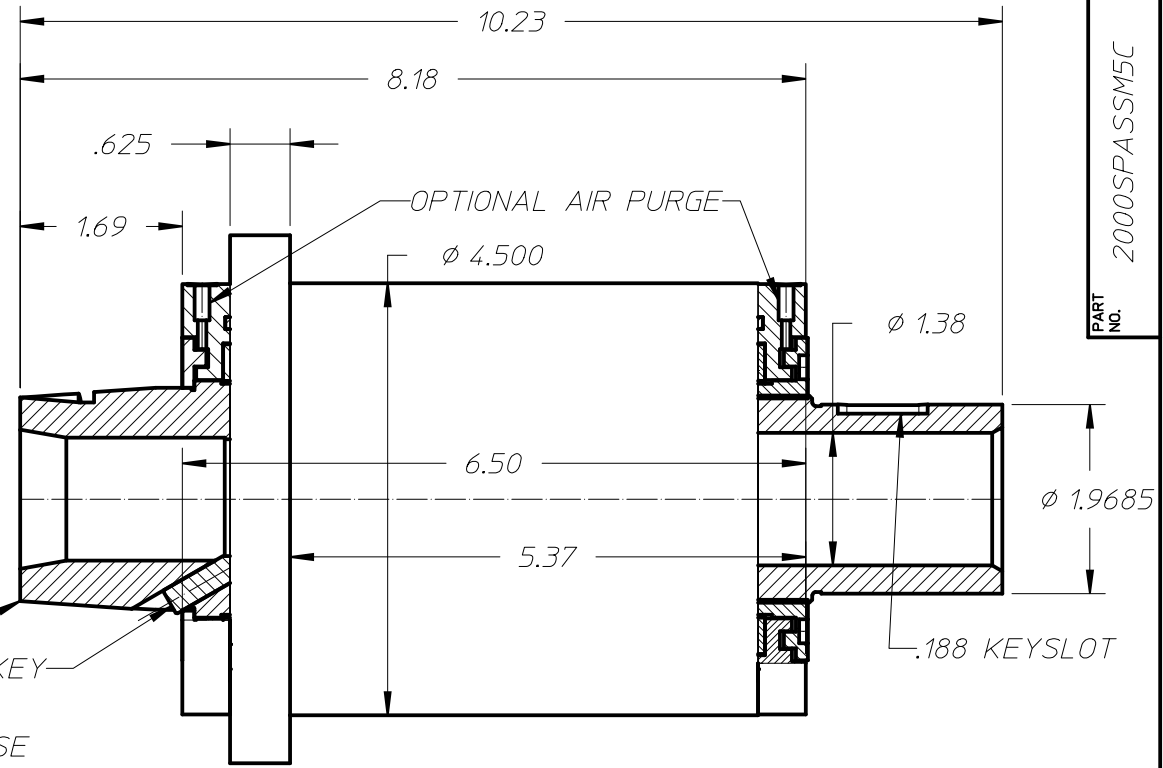


PART NO. 2000SPASSM5C

CLEARANCE HOLE FOR A 1/4" THD SHCS
6X EQUAL SPACED ON A $\phi 5.000$ B.C.




4° TAPER NOSE



| REV. | DATE | CHANGES | BY |
|------|------|---------|----|
| | | | |
| | | | |
| | | | |
| | | | |
| | | | |

| | |
|---|------------|
| MATERIAL | |
| FINISH | HEAT TREAT |
| REFERENCE DRAWING: | |
| UNLESS OTHERWISE SPECIFIED DECIMAL DIM. .xx ±.015 .xxx ±.005 FRACTIONAL DIM. ±1/64 ANGLES ±1° ROUND EDGES .005-.015 CORNERS FILLETS .005-.020 SURFACE FINISH 32√ | |



DUNHAM
TOOL COMPANY
DIVISION OF LISLE CORPORATION

TITLE
5C 2000 CARTRIDGE SPINDLE

| | | |
|------------------------|-----------------------|----------------|
| FM-09-047 2/19/2015 | DR. MM | DATE JAN-27-20 |
| USED ON | CHK. | DATE |
| SCALE | PART NO. 2000SPASSM5C | |